

# RainbowYOUTH

*Annual Report 2018*



2018

# Contents

<u>Who We Are</u>	02
<u>Taine Polkinghorne &amp; Lucy Cowie, RY Executive Board</u>	04
<u>Strategic Overview</u>	05
<u>RY Remembers Daniel Chorley</u>	06
<u>If It's Not Gay, It's Not Gay</u>	08
<u>Frances Arns Executive Director Report</u>	10
<u>Annual Member Survey Results</u>	12
<u>A Historic First - RY Drop-in Centre, Tauranga</u>	14
<u>Bay of Plenty Support Grows</u>	16
<u>Renovations to Grow RY's Support Capacity</u>	17
<u>A Year in Numbers</u>	18
<u>Learn.RY Volunteer Learning Platform</u>	19
<u>Auckland Pride Festival 2018</u>	20
<u>RainbowYOUTH's New Merch Line</u>	22
<u>#Outloud Aotearoa</u>	24
<u>Volunteer Spotlights</u>	26
<u>Hamish Tait, Treasurer</u>	28
<u>Our Generous Donors &amp; Supporters</u>	29
<u>Supporter Spotlight 2017-2018</u>	31
<u>Annual Meeting Minutes</u>	32



# Who

## we are

RainbowYOUTH is a charitable organisation that was established in 1989. RainbowYOUTH is here to work with queer, gender diverse and intersex youth as well as their wider communities.

Our motto is:

*“know who you are, be who you are”*

Tiwhanawhana Trust have gifted us a version of our motto in te reo Māori:

*“whaia to ake nga-kaunui, i te pono, i te marama”*

Simply translated, it means: follow your desires with truth and clarity.

# Our

## vision

All young people thrive in Aotearoa.  
*He waka eke noa*  
(A waka which we are all in together, without exception).

## mission

To create social change in Aotearoa by providing support, information and advocacy for queer, gender diverse and intersex youth, their friends, whānau, and communities.

## values

- AFFIRMING AND EMPOWERING YOUNG PEOPLE FROM ALL WALKS OF LIFE  
*We affirm and empower young people of all abilities, religions, countries, communities and backgrounds.*

- YOUNG PEOPLE DETERMINING THEIR JOURNEY  
*We know that young people are the experts when it comes to what they need and want, and we create the space for them to make that happen.*

- PROACTIVELY AND RESPECTFULLY HONOURING TE TIRITI O WAITANGI  
*We recognise the importance of honouring Te Tiriti, and are incorporating this into our kaupapa, our work and organisation.*

- STRENGTHS-BASED ADVOCACY  
*We know that our young people are brave, resilient, courageous, generous, and so many other great things. We advocate for and with them by focussing on those strengths.*

- FOR YOUTH, BY YOUTH  
*Our services, groups, events and organisation are made for youth, and are led by youth.*





## Taine Polkinghorne and Lucy Cowie Co-Chair Report

It's safe to say that the past year has been one of tremendous growth and reflection for RainbowYOUTH (RY).

One of the more significant changes saw Duncan Matthews, our Executive Director of 4 years, move on from RY. Duncan gave many years of service; initially through voluntary roles as a group facilitator, board member, and then board chair, before becoming Executive Director in 2013.

In September 2017, RainbowYOUTH was delighted to announce that Frances Arns had been appointed to this position. Frances has brought fresh energy and ideas to the organisation, and both board and staff have found the transition to her leadership remarkably smooth.

Change in leadership and continued growth has presented a great opportunity for RY. We've spent time taking stock of where we're at as an organisation; where we see ourselves going and the changes we want to see and drive in Aotearoa. We've had some incredible and wide ranging conversations as an Executive Board. The outcome of these conversations (other than an inspired and exhausted Board!) is our first three year strategy, as well as a new vision and revised mission statement and values. We are so excited to be able to share these with our young people, sponsors, and community.

This new strategy sets the scene and direction of growth we will undertake to 2020. Six focus areas will guide our work over this period. One of the

areas of particular importance to us as co-chairs is the need to develop our services to be accessible and relevant to the needs of our Māori and Pasifika rangatahi. Through our annual survey, we know that we under-serve these communities. One of the big focuses for the Board and leadership of RainbowYOUTH in this strategy is becoming a best practice organisation for honouring Te Tiriti o Waitangi.

Our new vision reflects the continued need for RY to be working with and alongside other communities and community organisations. As we are youth-run and youth-led, we want Aotearoa to be a place where all young people thrive. We know that this can only be achieved through strong partnerships and collaboration, bringing together both organisations and communities in harmony.

Approaching our 30th anniversary next year, we are looking forward to celebrating the colourful history of RainbowYOUTH. We've got big plans to bring past, present, and future RY whānau together to reflect on all of the awesome things we've achieved in that time. We can't wait to discover what the next 30 years hold for RainbowYOUTH!

Taine Polkinghorne

Lucy Cowie

# RAINBOWYOUTH 2020 STRATEGY

These are the six focus areas that the board and staff have identified as being priorities for RainbowYOUTH to focus our work on for the next three years.



### Meeting our rangatahi where they are

RainbowYOUTH provides safe, accessible, inclusive and useful spaces for all rainbow rangatahi, their friends and whānau



### Nurturing partnerships to maximise our impact

RainbowYOUTH partners seamlessly with government, community organisations, commercial organisations and local iwi



### Serving our Māori and Pacific whānau

RainbowYOUTH provides relevant services for queer and gender diverse Māori and Pacific rangatahi



### Data-driven and need-responsive services

RainbowYOUTH uses a fact based understanding of our community to inform our services, while staying responsive to the needs of rangatahi who reach out to us



### Promoting our community across Aotearoa

People in Aotearoa have a better understanding of the different identities that exist within our community.



### Enabling RainbowYOUTH to operate sustainably

Ensure the ongoing success of RainbowYOUTH





Daniel (centre) with Samantha Hitchcock and Tamati Coffey during a celebration of Tamati's support of RY during Dancing with the Stars in 2009

## RY Remembers Daniel Chorley

On April 12th 2018, RainbowYOUTH Life Member Daniel Chorley passed away after a battle with cancer. Daniel was a former facilitator and Executive Board member of RainbowYOUTH and was involved in the organisation for 10 years. We asked former Executive Director and fellow RainbowYOUTH Life Member Duncan Matthews to reflect on the impact Daniel had on RainbowYOUTH. Below is an abridged eulogy that Duncan read on behalf of RainbowYOUTH at Daniel's memorial service on 19th April 2018:

*Daniel was one of the first people I met at RainbowYOUTH, more than 10 years ago. With a charming smile and intelligence, he was the person everyone wanted to be friends with at RY. I felt lucky back then, and still feel lucky now, to be able to call Daniel a friend. Like I know many other people would*

*also say, Daniel played a key part in helping me to become who I am today. His confidence in himself, his ability to be out and proud in the world, he was popular yet friendly, and how he led by example in his hard work for RainbowYOUTH, shone through as things I didn't know were possible before becoming friends with Daniel. He was the personification of RY's motto, Know who you are, and be who you are.*

*Daniel spent over 10 years of his life volunteering and working with RainbowYOUTH, being one of the main drivers and source of strength that saw the organisation grow and change from a small central Auckland charity, to one that leads nationally on all things Rainbow. Daniel dealt with staff when they got a little too big for their boots. Daniel kept his cool when his fellow board members panicked, and Daniel*

*stepped up to run the organisation when no one else was there. Every organisation has that person who has been there forever and seems to know everything, and Daniel was that person for RY.*

*Everyone who walks through RY's doors to seek help receives it partly because of him. That's his legacy at RainbowYOUTH, and his legacy to Aotearoa.*

*Daniel, I miss our time at RainbowYOUTH together. Go well on your next journey, because I can't believe that your time has ended here.*

*Whaia to ake ngakaunui, i te pono, i te marama.*







## If It's Not Gay, It's Not Gay.

In New Zealand, using the word gay negatively is all too common. This is especially hard for queer and gender diverse youth developing their identity. To combat this behaviour, we created a video arming people with tools to call out their friends using an easy to understand set of definitions: simply, it's fine to use the word "gay", but only if it's actually gay.

With the combined skills and resources of the teams at Y&R and MediaWorks, we were able to create Aotearoa's first advertisement on LGBTIQ issues to ever screen on television. Meanwhile, on the internet, it went viral.

*"It's deeply disappointing but it's not gay."*

NZ Quote of the Year 2017  
Finalist - The New Zealand Herald

We were incredibly lucky to have an opportunity to kick this conversation off in such a stylish way. We want to make sure it continues. Help us out by sharing the ad, or having conversations about why language matters with your friends and whānau.

And remember, if it's not gay, it's not gay.

# 25

*Million*  
impressions in  
24 hours

# 16

*Thousand*  
callouts

# 2k

*Plus*  
apologies





## Frances Arns Executive Director Report

The past twelve months have been massive for RainbowYOUTH. Even in the nine months since I joined as the Executive Director, there have been so many exciting and positive milestones and changes. I want to acknowledge the staff in particular for the way that they have welcomed me into the whānau, been patient with me, and generous with their time and knowledge of RY and who we are. I feel so lucky to have been given this opportunity, and have loved (almost) every minute of my time at RY so far!

Over the past year we've seen some changes, with some people we've been sad to see move on, and some awesome new people joining us. Last year we launched our first (and THE first) national ad campaign advocating for our community, the "If It's Not Gay, It's Not Gay" campaign. The response and positive feedback from the campaign was

overwhelming. It went viral and reached over a million people around the world. There's a great platform there for future ads, so watch this space!

At a more local level, we opened our second drop-in centre in Tauranga. A space where intersex, queer and gender diverse young people can go and spend time in a safe inclusive environment. We've seen the RainbowYOUTH community in the Bay of Plenty grow a lot, to the point where we now have three of our most popular support groups running within the region! I visited them earlier this year, with RY staff members Adam and Nate, and was so stoked to hear the positive impact RainbowYOUTH is having in the region, which is really back to the young people who are creating and holding that space for each other. I got to meet Ollie, and I'm so grateful that he has shared his story with us all in this report. Imagine if young people in

regional areas all over Aotearoa could have that same experience of peer support and community. That's what I would love to see.

Looking ahead, RY is coming up to thirty years old in 2019! It's amazing to think, that as an organisation we will have 30 years of community, stories and experiences of queer, intersex and gender diverse young people in Aotearoa. It's something worth celebrating, and you can be sure that there will be lots of opportunities to celebrate with us next year.

In the meantime, thank you all for your support, work, passion and belief in RainbowYOUTH this year. I am so excited to see what the future holds for us, and for our young people.

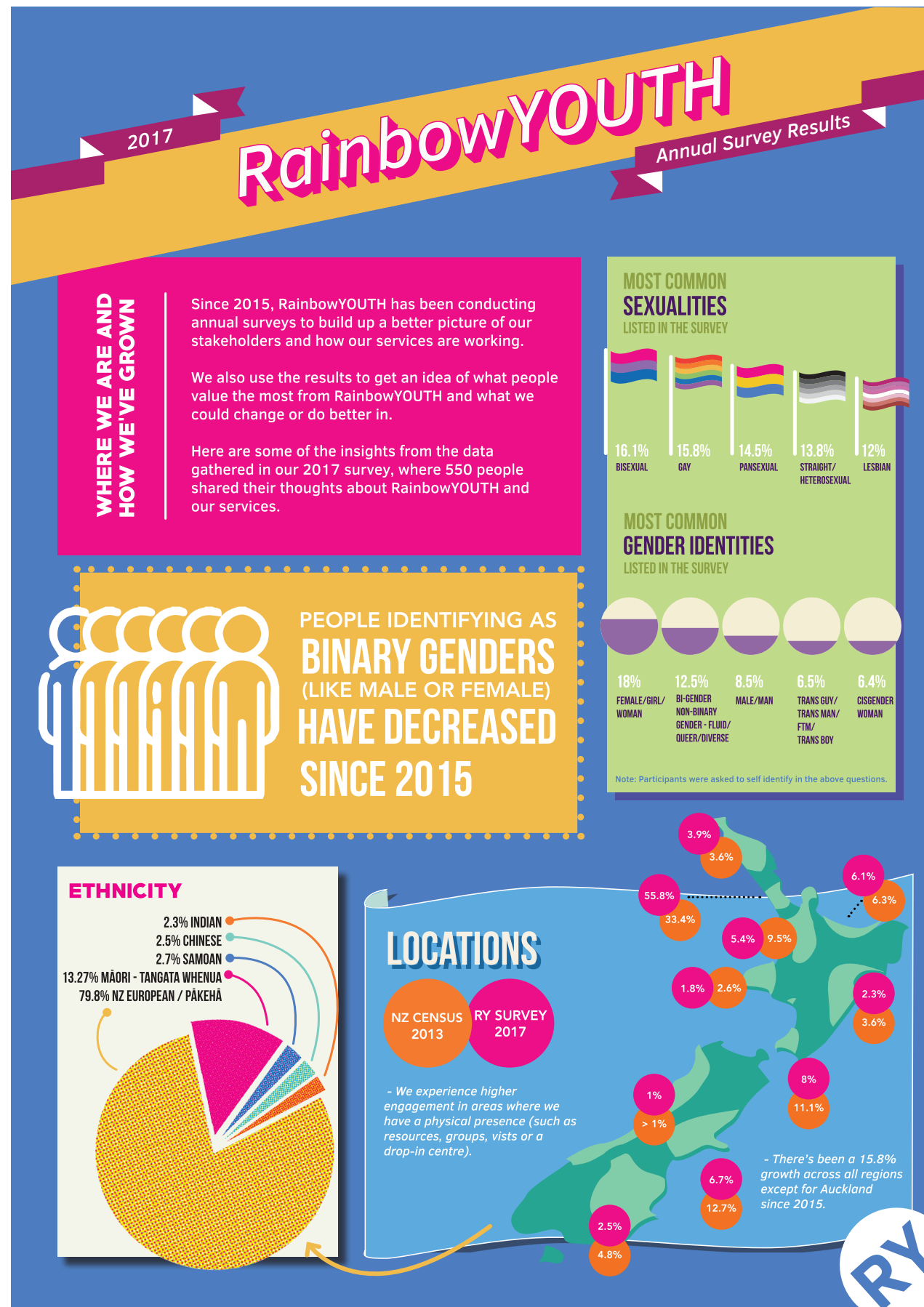
Ngā mihi,

Frances Arns

“ \ ”

*Imagine if young people in regional areas all over Aotearoa could have that same experience of peer support and community. That's what I would love to see.*

Frances Arns, Executive Director RY







## A Historic First: RainbowYOUTH Drop-in Centre in Tauranga

In October 2017, we officially opened the doors to our Tauranga drop-in centre, the first RY drop-in centre outside of Auckland! The drop-in centre, located in the Historic Village, represents a culmination of RainbowYOUTH's work in the Bay of Plenty region beginning in 2014 with the creation of the peer-support group 'TaurangaPryde'.

The success of this group, which has seen growing numbers of young people attend has led to RainbowYOUTH being able to employ a Regional Coordinator for Bay of Plenty in October of 2016 through funding from MSD and the

Bay Trust, amongst others. Nathan Bramwell, as the RainbowYOUTH Regional Coordinator for Bay of Plenty, has worked over the past year to build connections with existing youth services and help equip the wider communities with tools to competently address the unique needs of queer and gender diverse youth.

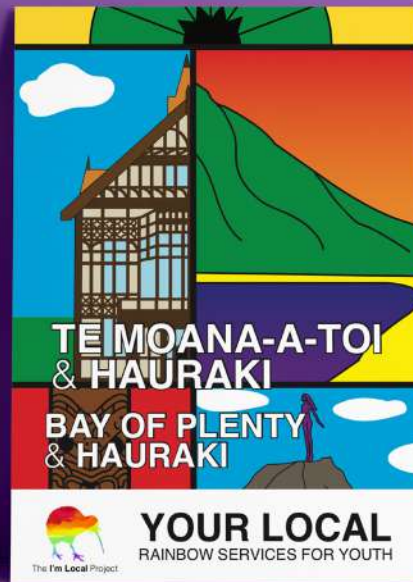
"It is super exciting seeing the youth in Tauranga being able to create a space of their own," Bramwell says. "Not only is the space one where they can be social and have pride in their identities, it shows the support and welcome of the wider youth services and networks we have fostered, giving

holistic empowerment and a sense of belonging back to the youth."

Sixteen-year-old TaurangaPryde facilitator Kane MacFarlane hopes the opening of the new drop-in centre will help "...the community to embrace us. It will also be great place for schools and services to refer too if they have a questioning young person.

It will be a place young people can go and be themselves and make a community. When a questioning young person is trying to figure out where to go in Tauranga, our space will be waiting and accepting," MacFarlane says.





Thanks to the Rule Foundation, we were able to print and distribute these choice resources which list local groups that can offer support to the queer and gender diverse community

Our work in Bay of Plenty is supported by



## Bay of Plenty Support Grows

The capacity of the Bay of Plenty Region to support its queer and gender diverse rangatahi has grown in leaps and bounds this year! With the help of our Regional Coordinator Nathan, two new RainbowYOUTH peer-support groups have launched. Kawerau GSA is based in Kawerau and Rainbow Vegas is based in Rotorua. Both groups provide safe supportive social spaces for queer and gender diverse rangatahi between the ages of 13 - 27.

We asked one of our facilitators, Ollie (aged 18), to share a testimonial about their time working with the Kawerau GSA group:

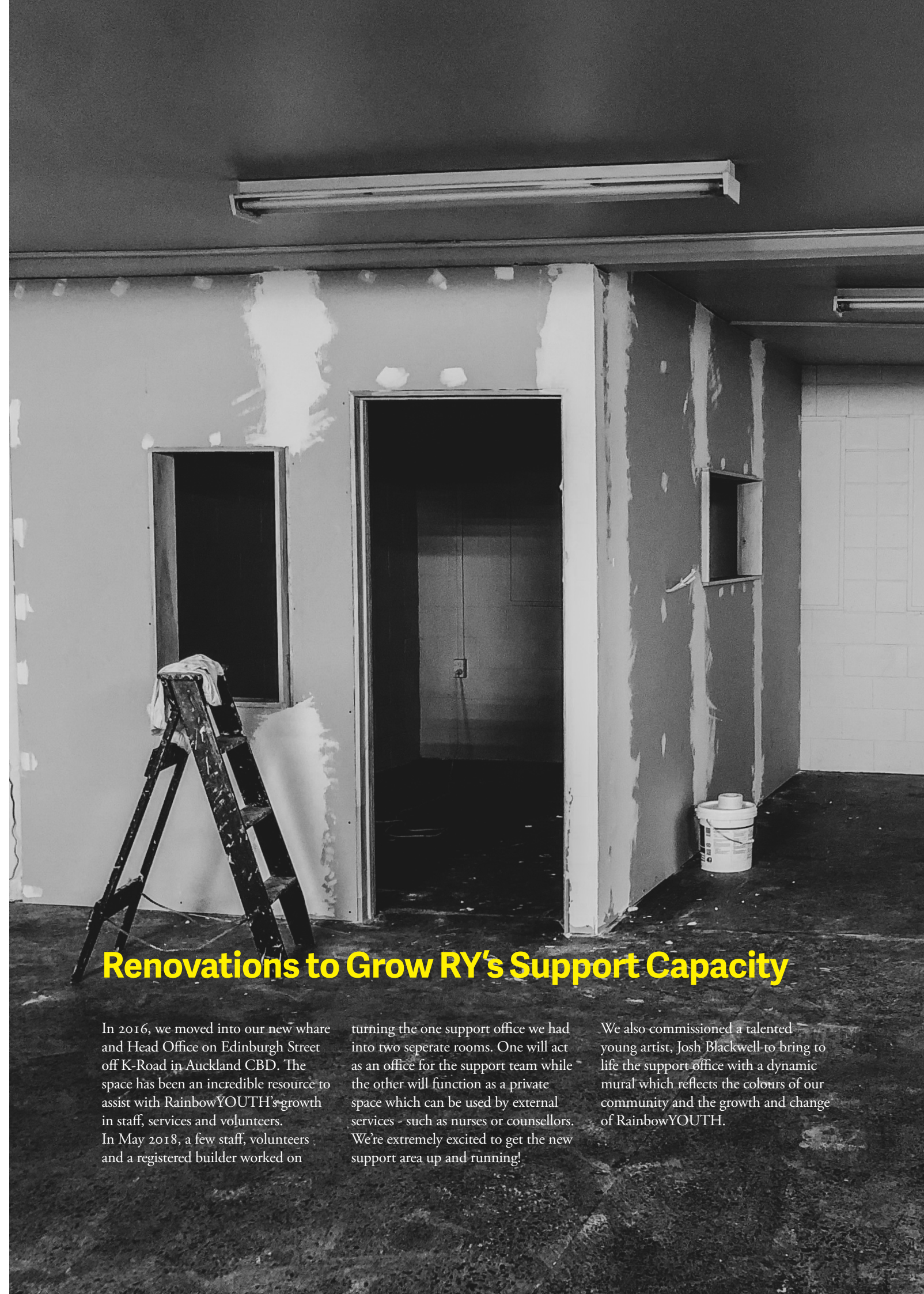
*Before I moved back to New Zealand, I was living in a country where being a part of the LGBT community was punishable by death. I knew that I was going to be moving to a small town in rural NZ, and I got plenty of warnings about getting my hopes up. However,*

*I was still excited, because I knew that anything would be better than where I was at that moment. In the first year I spent in Kawerau, my school was accepting, a majority of my classmates were kind, and my family was more or less supportive, but I still felt like something was missing. Then I met the new school counsellor, Chole, who had volunteered for RainbowYOUTH previously. We quickly decided that a school GSA would be a great idea, and we followed through and created a group that lead to many LGBT students finding each other in a school where we felt pretty much invisible.*

*In September 2017, we found out about a facilitation hui that was being held in Tauranga by RainbowYOUTH, and many group members were excited about the opportunity to meet people from around our area and to create a stronger bond with Rainbow Youth as an organisation. Ten people from our group ended up attending, and we all*

*came out of that trip feeling inspired and energised to start something even bigger.*

*Myself and Chloe both worked to set up a group affiliated with RainbowYOUTH in our community. We now have people from Whakatane and Kawerau attending weekly meetings in Kawerau, where a group like this had never existed before. I facilitate this group, and the amount of support for the group's continuation I hear from the people who attend is sometimes quite overwhelming. It has helped create a safe and welcoming space for youth to be themselves and talk to people within their community, and to talk about things they felt they couldn't before. I feel a sense of purpose running this group, and I feel a sense of comfort knowing that the group is helping not only myself, but many other people, in their journey to accepting themselves.*



## Renovations to Grow RY's Support Capacity

In 2016, we moved into our new whare and Head Office on Edinburgh Street off K-Road in Auckland CBD. The space has been an incredible resource to assist with RainbowYOUTH's growth in staff, services and volunteers. In May 2018, a few staff, volunteers and a registered builder worked on

turning the one support office we had into two separate rooms. One will act as an office for the support team while the other will function as a private space which can be used by external services - such as nurses or counsellors. We're extremely excited to get the new support area up and running!

We also commissioned a talented young artist, Josh Blackwell to bring to life the support office with a dynamic mural which reflects the colours of our community and the growth and change of RainbowYOUTH.



# 158

Peer group meetings

**A Year in Numbers**

# 604

Resource packs downloaded or distributed

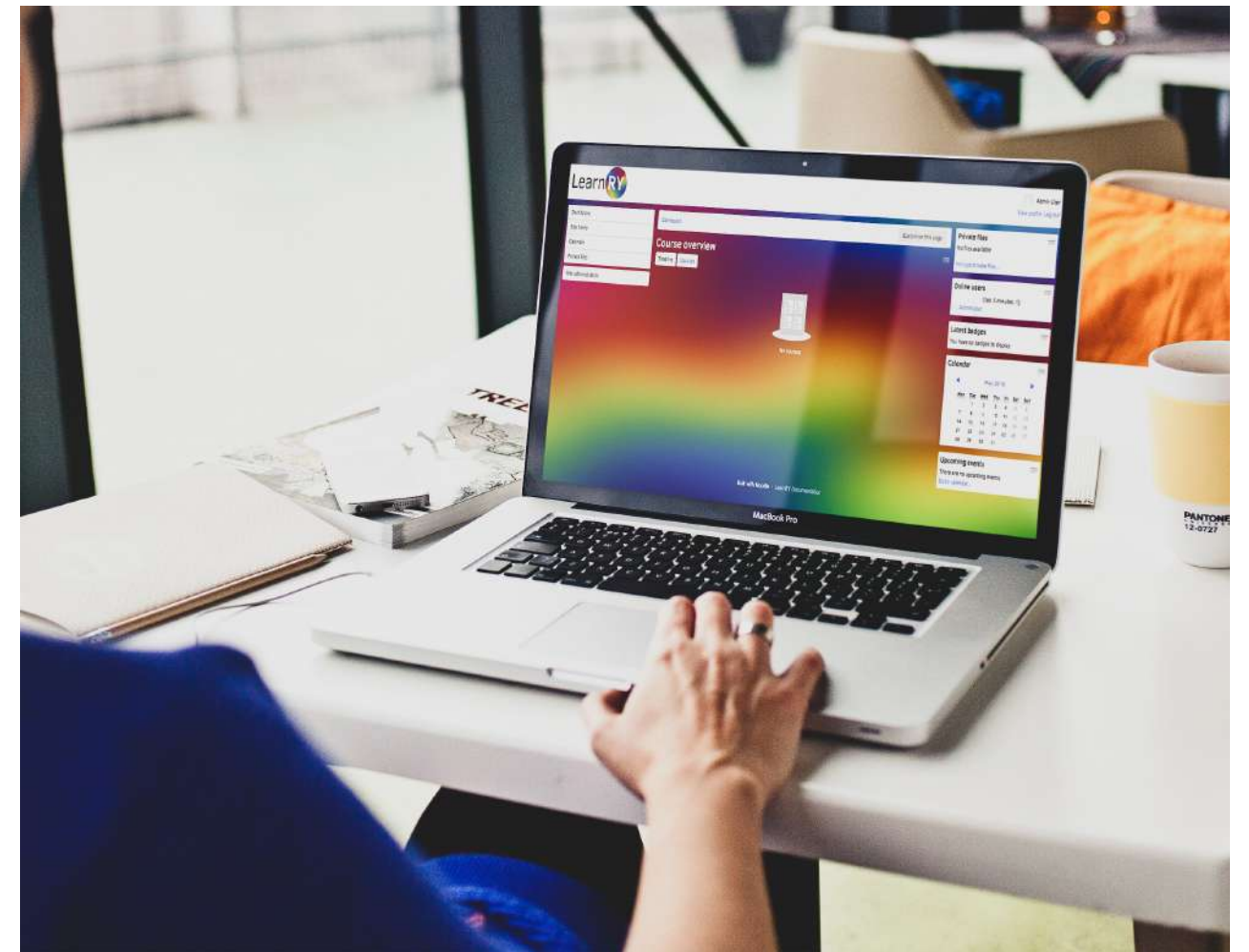
An average of

# 52

people *per week* visited our Auckland & Tauranga drop-in centres

# 88

*Thousand* visits to our website



## Learn.RY — RainbowYOUTH's Volunteer Learning Platform

Since 2016, ASB and RainbowYOUTH have partnered to offer a scholarship for volunteers who are also undertaking tertiary study. This year, we worked with ASB to contract one of our members to work on a project at RainbowYOUTH to help build their experience in their field of interest. We were able to

contract an awesome young web programmer Alice to help build a online learning platform - Learn.RY. At RainbowYOUTH, we work with numerous staff & volunteers who need to be inducted and trained in order to complete their work within RainbowYOUTH - that's where Learn.RY comes in! Some of

the modules include working with young people, governance duties and strategic planning. Alongside this, Learn.RY will be used by external groups as a training platform for anyone who runs peer-support groups for queer and gender diverse youth all around Aotearoa.





## Auckland Pride Festival Overview

During the Auckland Pride Festival 2018, RainbowYOUTH partnered with Auckland Pride and the Ministry of Youth Development to run PrideYOUTH - a series of events run and led by young people during the festival. PrideYOUTH was led by Jasmine Deans, a member of RainbowYOUTH. She reflects on PrideYOUTH here:

*“Working on the PrideYOUTH project has definitely been the highlight of my year so far. I have witnessed and attended several Pride festivals in the past but as a young person, it’s hard sometimes to not feel a bit left out. That’s why when I heard about RainbowYOUTH’s opportunity to get*

*involved with creating a festival more suited to young people like myself, I was super keen to help out. I think building a strong sense of unity within the LGBTQ+ community will always be important, and it includes the up and coming generations of queer people too. Working on this project definitely helped me see that in action; we worked as a team and I met so many amazing people, some of whom have even become close friends. Seeing the inner workings of Pride showed me that it absolutely is much more than just a party; it’s a celebration of love, diversity, unity, and being unapologetically queer. But that’s not all I learnt; following the guidance of my wonderful mentors, I picked up practical skills like budgeting and time-*

*management, putting them to good use to create and run three youth-focused events during Pride month, in addition to the amazing float we put together for the Parade. All in all, the Project was a fun and enriching experience that I’d absolutely do again, and I hope to see more young people getting involved with things like it in the coming years”.*





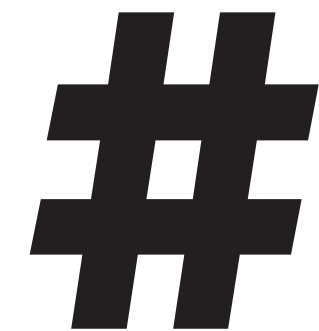


## Rainbow- YOUTH's New Merch Line

Off the back of our [#LanguageMatters](#) activation during the Auckland Pride Festival 2018, we decided to take the plunge and produce a limited series of merchandise to sell.

The merchandise helps grow RainbowYOUTH's brand, provides valuable income for our services and helps spread messages of inclusion and the importance of language.

Tell the world what pronouns to use:  
[www.ry.org.nz/shop](http://www.ry.org.nz/shop)



**LanguageMatters**



# #Outloud

## Aotearoa

#OutLoud Aotearoa is a project run by RainbowYOUTH and #WeAreBeneficiaries, in response to the 2018 Government Inquiry into Mental Health and Addiction.

The aim of #OutLoud Aotearoa is to use art to share the stories and wishes of the queer, gender diverse, intersex, takatāpui, MYPFAFF or rainbow communities around Aotearoa's mental health and addiction services.

This project will wrap up in late June 2018, after which we will present a report compiling the artworks along with recommendations to the Mental Health and Addiction Inquiry Panel as well as to mainstream mental health and addiction services who work with our communities.

It's our hope that this project and the stories shared will help ensure the future of our mental health system addresses and uplifts the wellbeing of rainbow communities.

We want to thank everyone who has shared their stories so far and also acknowledge the incredible local artists who have lent their talent to the project.

Proudly supported by



"I have a clear memory of sitting in a therapist office, and being told who I am.

I was in such a dark place in my life, and I was told that I was "too much to handle" as if my queerness was a burden and I needed to hide it in order to fully survive in high school. Mental health services where I lived were so oppressive for queer youth in particular, I was told that I was not like "normal" teenagers, they would try to coerce my emotions in order to fit me into a category that was suited for them to handle.

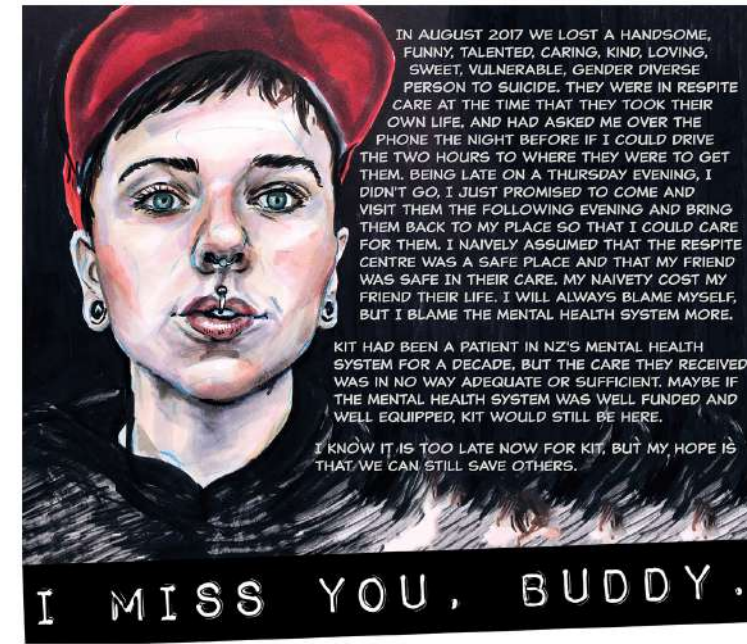
I always felt that they thought I am mentally ill because I am queer, and that they needed to make me "normal" so that they could treat me."

- Te Maungarongo Wilson

#outloud



splitclay



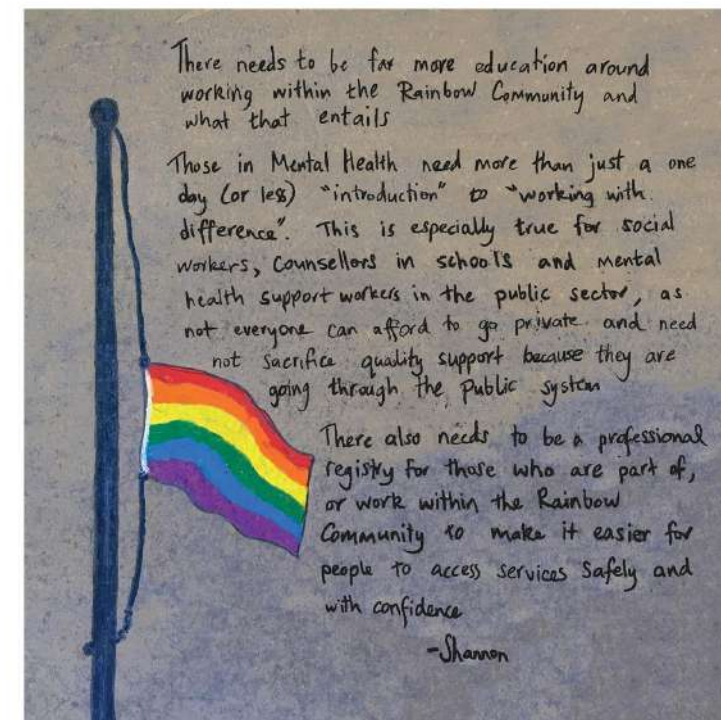
My GP referred me to Mental Health Services as I was severely depressed and suicidal. When I was finally seen by someone it was by a mental health nurse for a consult to see what services I needed. She told me that my GP had said I was queer in the notes passed on about my health.

From this she assumed that I was transgender (I was not) and told me that in order for me to get better I just needed to "stop thinking about [my] gender."

She said that I was not bad enough to get a medication review and sent me home. I later got the help I needed after my family and I pooled money to pay for a private psychiatrist. I wish there was more funding available so that people in crisis can get the help they need.

I wish healthcare professionals better understood rainbow identities - even basic things like the difference between sexuality and gender identity. We deserve better.

- Vee







## Min - I'm Local Project Volunteer

Kia ora, my name's Min. I'm queer and I go by the pronouns she/her. I enjoy surfing and going on adventures.

*What motivated you to be involved with RainbowYOUTH and the I'm Local Project?*

I've always wanted to be involved with RainbowYOUTH. Growing up, RY was my first contact with an organisation directly supporting LGBTIQ youth. When I got back from overseas it was pride month in NZ, and I saw that RY had planned a lot of cool stuff, and they were needing volunteers, so I signed up. And then

after that I helped out with the *I'm Local Project*. I had a great time, met some beautiful humans, and learnt heaps in the process!

*What do you wish people knew about RainbowYOUTH?*

How much work goes on behind the scenes. Staff and volunteers really do put in a lot of personal time and effort! Also how warm and accommodating the Auckland drop in centre is. It's a great space just off Karangahape Road where everyone is welcome to chill (there's a neat selection of books from the library as well).

*I had a great time, met some beautiful humans, & learnt heaps in the process!*



## Rafiqah - RY Drop-in Centre Intern

My name is Rafiqah, also known as 'Rayefaye'. I'm 27 years old. I'm a Filipina transgender woman. I'm passionate about helping the community because I believe that social justice is crucial in helping society. As a person, I love food, I love talking to people and I like learning about other people's cultures.

*What motivated you to be involved with RainbowYOUTH?*

The reason why I wanted to volunteer for RainbowYOUTH in the first place is because for years I actually wanted to volunteer but I was living

on the shore, so it was more difficult to access. And then I just realised that I live here in the city and I would like to help out a very wonderful organisation because I remember the love and care that I felt when I was apart of it a few years ago so I decided to come back to it.

*What would you tell someone who is thinking about (donating, volunteering, etc.)?*

For someone who wants to volunteer definitely give it a go because you're not losing anything. The thing is, the staff are probably one of the most

wonderful people you will encounter because my experience as a volunteer is that I have a specific role. I know my place in the organisation but it's not like "oh, I'm higher than you". It's not snobby. So, when you come in here you know that you have a position to fulfill but you always know that you'll always have support. Whether you're disabled or whether you just have general anxiety, that's the one thing I want to let people know - that RainbowYOUTH is a very caring organisation and it's not like one of those organisations that just says it on paper. It actually means it.



## Hamish Tait

### Treasurer of the RY Executive Board

The 2018 year was RainbowYOUTH's biggest year yet. That we can continue to write this year after year is a real testament to the unparalleled level of support from all of our wonderful donors, sponsors and supporters, as well as the fantastic work put in by the RainbowYOUTH (RY) team.

Thanks must go to Foundation North, the Lotteries Commission, and the Community Organisation Grants Scheme, from whom we continue to receive support year-on-year. We were also fortunate to receive a generous grant from the Todd Foundation, now for the second year running. Further generous supporters included Cryptopia, the Raye Freedman Trust, Seventh Day Studio, GALS Choir, the Rule Foundation, Te Puni Kōkiri, the Southern Trust, Solid Limited and the Estate of Sir John Logan Campbell. Thanks also to key partner ASB, which has continued its valuable

support of RY this year, including by providing a huge level of support with our fundraising efforts and again sponsoring the ASB & RY Scholarship, which this year took the form of a web design internship at RY. Together with the Mediaworks Foundation, ASB also supported the fabulously successful It's A Bit Posh gala dinner early in the year and helped raise money for RY through ticket sales, a charity auction and generous donations from guests.

Our work extending our reach across Aotearoa has also continued during 2018 thanks again to the very significant support from the Ministry of Social Development and the Ministry of Youth Development. This work is an important part of our long-term strategy, and we look forward to the Ministries' continued support for the 2019 year and beyond.

And finally, 2018 has again been

a record year for donations from a range of generous individuals and organisations. The level of support we've received from Kiwi schools, businesses, and other organisations the length and breadth of the country, as well as a huge number of everyday people, has been incredible. And as RY grows in size to provide services, support and advocacy for more and more queer and gender diverse young people all over New Zealand, these generous donations become more and more important.

To all of our fantastic supporters during the year, whether regular givers or one off donors, thank you very much from the RY team: we can't do it without you.

## Our Generous Donors and Supporters

For the 12 months ended 31st March 2018

### PERSONAL DONATIONS

A J Hutcheson  
A L Fisher  
A M Welvaert  
Aaron Tily  
Adam White  
Adrien Lalchere  
Aimee McNaughton  
Alex Rodgers  
Alison Clarke  
Allen Granvill  
Amanda Tunstall  
Amy Duffell  
Anake Goodall  
Andrew Grear  
Anna Macdonald  
Anne Olsen  
Anusha Vishnampe  
Anyta Sunday  
Azra Hodzic  
B Davey  
Bell Murphy  
Ben Bridle  
Ben van Woerkom  
Bob McCoskrie  
C L Wall  
Carmel Rowden  
Catherine Anderson  
Charlotte Clarke  
Charlotte Steel  
Chris Owens  
Chris Smith  
Claire Jongenelen  
Corinne Thompson  
Courtney Donovan  
Craig Hillas  
Craig Hoyle  
Craig McCulloch  
Creative Mornings  
C R Parker  
D S Wratt  
D A J Stewart and A J Wither  
Daniel Hunt  
Danielle Calder

David Martin  
Dillon Landi  
Doreen Martin  
Duncan Matthews  
S P & C Dunlop  
Dylan Jauslin  
E R Dunn  
Elizabeth Heritage  
Ella Hickford  
Emily & Co  
Esther Bushell  
Esther Roman  
Fionnaigh McKenzie  
Florence Wong  
Fran Eversfield  
Francis Jamieson  
Fraser Scott  
Gary Edwards  
Geoff Spong  
Gina Healey  
Gradon Diprose  
Graeme Coffey  
Gray Sharp  
H Wood  
Hamish Smith  
Hayley Beach  
Helen Heath  
Ian and Sandra Watson  
Ian Narev  
J Z Zheng  
Jack Barraclough  
James Gravestock  
Jamie Heim  
Jeannie Grant  
Jemma Hayman  
Jenni Sands  
Jerny Baker  
Jhonny Gagliano  
Joanna Li  
Julia Fletcher  
Julie Layt  
Julio Avila  
K W Bolland  
Karen Hudson  
Kate Addis  
Kathryn Farthing  
Katie Sutton  
Keith and Jane Campbell  
Kelly Mitchell  
Keri Davis-Miller  
Kevin klehr  
Kieran Craft  
Kirsten Dewhirst  
Manfred M Lange  
Lara Heppenstall  
Lauren Wilkerson  
Laurie Drabble  
Lisa McFarland  
Liz Byrne

Lucy Boomer  
Madeline Gee  
Marco H Creemers  
Martin King  
Matthew Lillis  
P & LA Matthews  
Melissa O'Loughlin  
Michael Crowley  
Michelle Kozak  
D R McSmith  
Ms Josette Chi Xu  
N E Laing  
N R Zibung  
N W Shanks  
Nancy Lion-Storm  
Nick Tuck  
Nicolina Newcombe  
Olivia Philpott  
Paul Conway  
Peeranui Visetsuth  
Peggy C  
Penny Lattey  
Peter Baxter  
Priyanka Trivedi  
Puneet Arora  
Rachael Dixon  
Rachel Brebner  
Rachel Dunlop  
Ralph Miller  
Rebecca Garden  
Reinz Reinz  
Richard Reid  
Rory MacDonald  
Ruby Walsh  
Ruth Large  
S C Watson  
S K Buch  
S P Shuttleworth  
Saing Te  
Sam Bunkall  
Sam Cunnane  
Samantha Ross  
Sandra and Ian Watson  
Sandra Butt  
Sarah Champion  
Sarah Harpur  
Sarah Stickland-Millar  
Scott Kelly  
Secret Santa  
Shane Elfield  
Simone Phillips  
Sol Marco Eleda  
Terri L Linehan  
TG Kerr  
Tim Swann  
Todd Emerson  
Tom Brennan  
Tom Cotter  
Wayne Matthews



# You Thank Frank

## Organisation Donations

AA Insurance  
Aha Koa  
ASB  
Auckland Airport  
Auckland Rainbow Community Church  
Co Op Bank  
Conquest Imports NZ Pty Ltd  
Connect Supporting Recovery Inc.  
Envelope Engineering Mel Guy  
Extra Extra Cafe  
Freedom Wigs Limited  
Grace Team Accounting Ltd  
Gung Ho Limited  
K Road Business Association  
Kiss Kiss  
L'affare  
Māori Television  
Mercer  
New Zealand Tourism  
NZ Police  
OPUS International Consultants  
Pirate City Rollers  
Solid Limited  
Pollitt & Partners Limited  
Sir John Logan Campbell Estate  
Rape Crisis Dunedin, Inc  
SpecficNZ Inc  
Spark Foundation  
Vincent J Lipanovich Family Trust

## Fundraisers

Alfriston College  
Comedy in Action  
Green Bay High  
Hamilton Pride  
Hobsonville Point Secondary School  
John Barrowman - Arrmageddon  
Kelston Girls College  
Kiwibank  
Lexicon Fundraiser  
Mt Roskill Grammar BOT  
New Plymouth Girls' High School  
Otago University STU (in memory of  
Laura Lawson)  
Pinehurst School  
Seventh Day Tattoo Studio  
Rosehill College  
Jez Kemp  
Some Feminist Club Nights  
Splice  
Takapuna Grammar  
UK Online Giving Foundation  
Waiopahu College  
Westlake Boys High School

## Supporter Spotlight for 2017 - 2018

### Gold



### Silver



### Bronze



# Rainbow Youth Inc. Annual General Meeting

## Minutes 25th June 2017

FORMALITIES BEGIN: 12:31 PM

MC: *Jono Selu*

**MOTION:**

That the minutes of the 2016 AGM held Sunday 26th June 2016 are a true and accurate record of that meeting

Moved by: *Jono Selu*  
Seconded: *Sophie Sills*  
Vote: Passed with 17 for

**OFFICER REPORTS**

Co-chairpersons Report presented by *Sophie Sills*  
Treasurer Report presented by *Hamish Tait*  
Executive Director Report presented by *Duncan Matthews*

**MOTION:**

That the Officer Reports presented by the Co-chairpersons (*Sophie Sills*), Treasurer (*Hamish Tait*) and Executive Director (*Duncan Matthews*) be accepted as presented

Moved by: *Jono Selu*  
Seconded: *Joel Gatland*  
Vote: Passed with 21 for

**PROPOSED CHANGES TO THE RAINBOW  
-YOUTH CONSTITUTION**

**MOTION:**

That changes #1 through #10 to the RainbowYOUTH constitution, as presented at the AGM, be adopted”

Moved by: *Debra Doyle*  
Seconded by: *Hamish Tait*  
Vote: Passed with 22 for

**EXECUTIVE BOARD ELECTIONS**

**MOTION:**

That *Toni Reid, Tim Swann* and *Dillon Landi* by designated as independent vote counters for Board Election”

Moved by: *Taine Polkinghorne*  
Seconded by: *Ryvre Thompson*  
Vote: Passed with 22 for

**MOTION:**

That the following recommendations from the floor is actioned by the 2017/2018 Executive Board:

1) That they investigate and fill the position of Tangata Whenua Representative within the first two months of the board term.

2) That they investigate meaningful ways to engage diverse cultures in the governance structure

**MOTION:**

That the current Executive Board of RainbowYOUTH stand down

Moved by: *Rachel Brebner*  
Seconded by: *Joel Gatland*  
Vote: Passed with 23 for

Moved by: *Jono Selu*  
Seconded by: *Sophie Sills*  
Vote: Passed with 21 for

**MOTION:**

That the results of the election, being:  
Co-chairpersons: *Sophie Sills* (one term) and *Taine Polkinghorne* (two terms)  
Treasurer: *Hamish Tait*  
Secretary: *Ryvre Thompson*  
Tangata Whenua Representative: Not filled  
General Board Members: *Bella Simpson, Lucy Cowie* and *Laura Olsen* are accepted by the membership and appointed as the Executive Board of Rainbow Youth Inc.

MEETING CLOSED: 4.09 PM





RY